




2-spindle front drilling-/milling unit PRECI-FLEX® ER20 with coolant supply (external or internal)

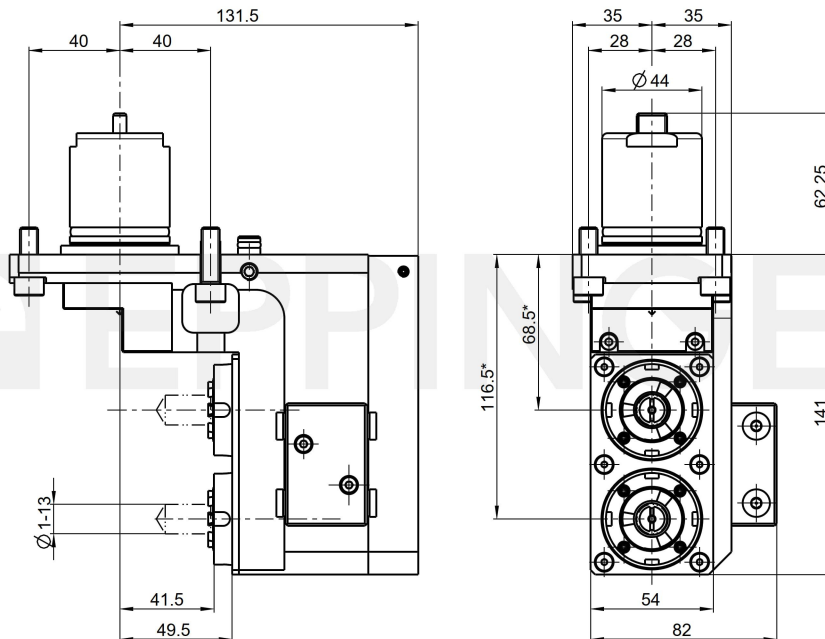
Part Number 7.174.450

for Star SX-38-B

- Ratio **1:1**
 - rpm at Input **max. 5700 rpm**
 - rpm at Output **max. 5700 rpm**
 - Torque at Output **max. 16 Nm**
 - Direction of Rotation 
 - Scope of Delivery **supplied with wrench, excluding collets**
- * Actual size inscribed on the tool**



Accessories Collets see Equipment for Toolholders Z2.1
 PRECI-FLEX® Adapter
 Spindle cover see P99.1



Technical Data Subject to Change

06.02.2023 | 13.02.2023